



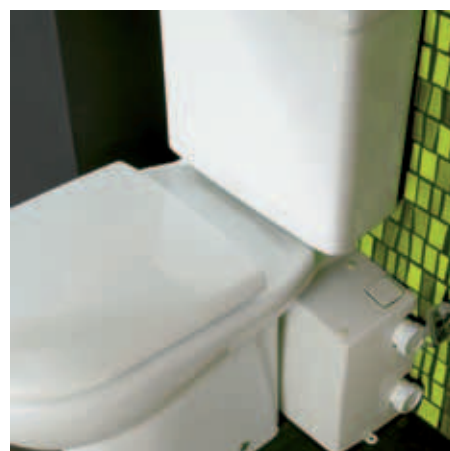
Installing a W.C. wherever you need one
is child's play

Clean System

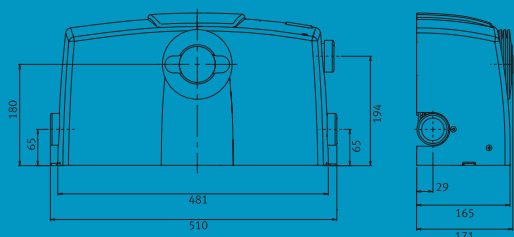
New sanitary evacuator



Clean more attractive and discreet, thanks to its innovative compact design, small size, silent operation and odour-free ventilation system with active carbon filter system.



502 x 170 x 265 MM. WEIGHT: 8 KG.

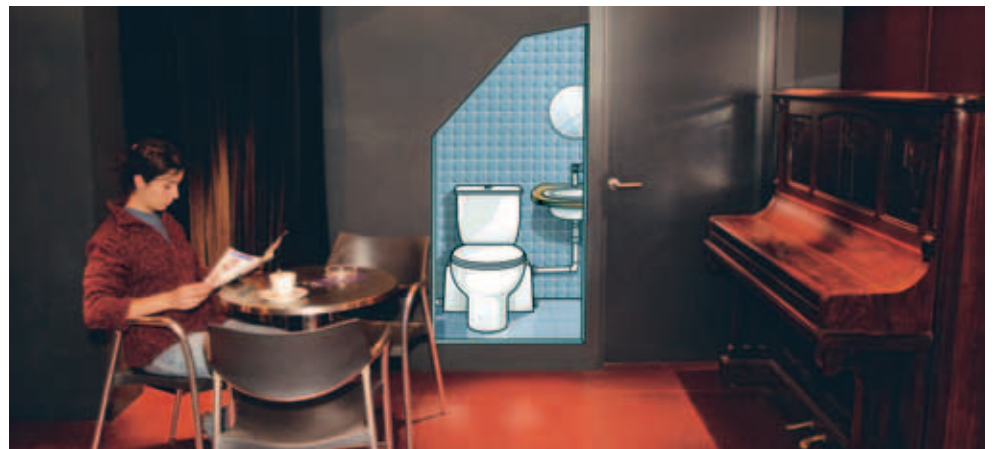


COMPACT, DISCREET AND ADAPTABLE

Modern, compact and symmetrical design to minimise the visual presence of the equipment in the installation. Its size enables it to be installed with any WC model available on the market, and its design enables unused foul water inlets to be concealed.

Extremely practical: makes it unnecessary to install pipes for the evacuation of odours.

Clean more versatile since a single model serves for a large variety of places that are hard to reach and in locations that pose technical problems.



DIFFICULT LOCATIONS:

Locations that are lower than the sewer system level: garages, basements, stairwells, bedrooms...

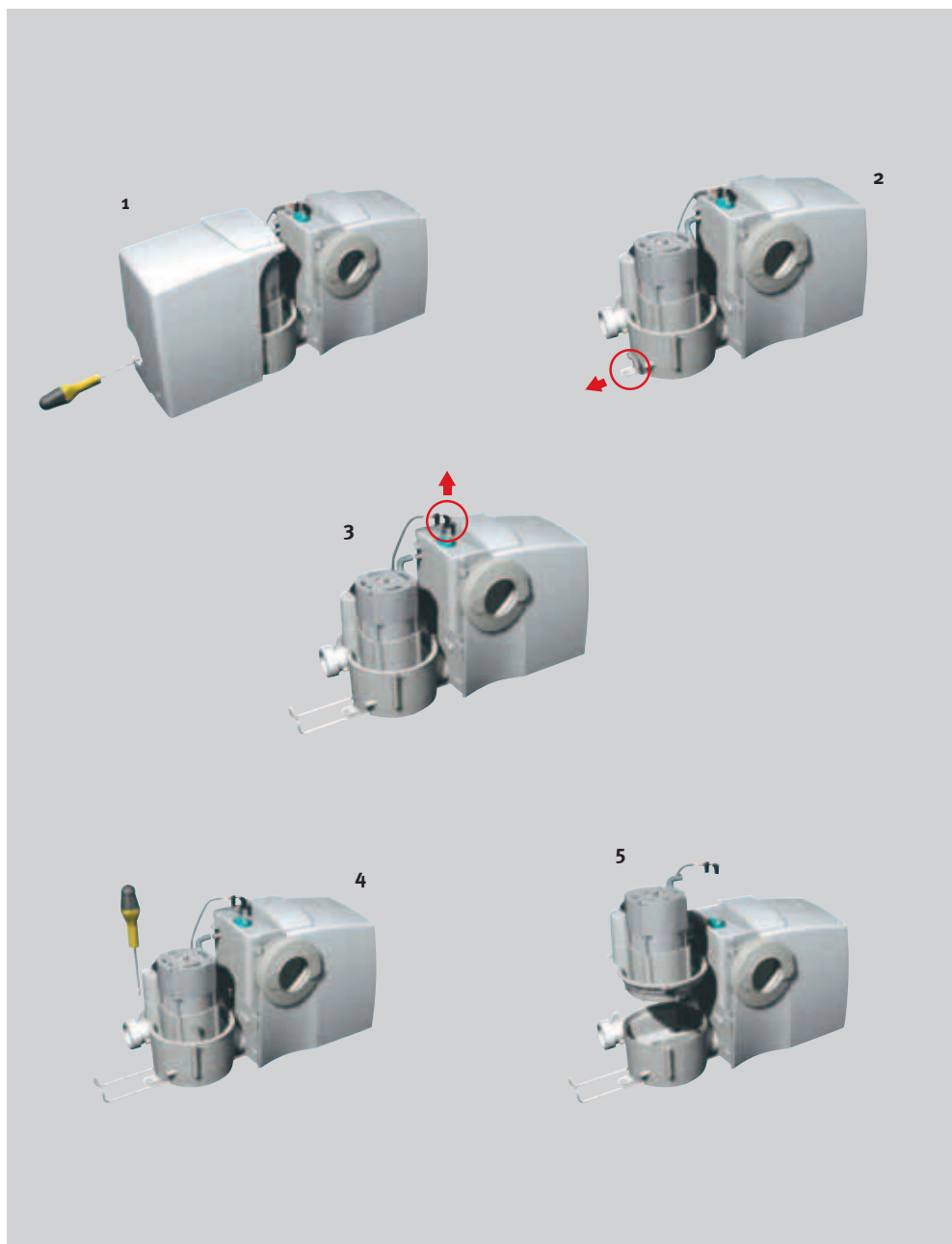
Locations that are on the sewer system level, with horizontal separation: swimming pool changing rooms, garden huts...

Facilities in sites not intended for this purpose: attics, stairwells, bedrooms, offices, hotels, factories, restaurants, bars, gyms, stores, old buildings, second homes...

Layouts without drainage connections.

Facilities intended to minimise the impact of installation work.

Clean more hygienic to repair and maintain, as its innovative removable pump system performs maintenance without the need to dismantle the pipes, and makes it unnecessary to come into contact with foul water.



Versatile
thanks to the exclusive
4-adjustable position system
of the discharge pipe.

EASY MAINTENANCE OF THE GRINDER PUMP

1. Unscrew the dismountable body (only 2 screws) and separate it from the fixed part.
2. Pull the lever on the lower part of the support where the grinder pump is located. A stopper will immediately seal the connection between the static body of the sanitary evacuation pump (where the sewage is), and the grinder pump, thereby preventing the sewage from passing through to the pump body.
3. Disconnect the cables from the pressure switch and discharger cap.
4. Unscrew the grinder pump from the pump support (only 3 screws).
5. Separate the grinder pump without touching the foul water.

Clean **more features** since it can be connected to multiple appliances: toilets, washbasins, showers, bathrooms, bidets, dishwashers, washing machines and sinks



Clean System WG



Clean System G




AVAILABLE MODELS

Clean WG: sanitary evacuation pump for faecal water. Has a direct built-in DN 100 toilet connection, and 3 foul water inlets (DN 40 or 32).

Clean WGS: Clean WG sanitary evacuation pump, with a built-in overflow alarm.

Clean G: sanitary evacuation pump with 3 foul water inlets.

Clean GS: Clean G sanitary evacuation pump, with a built-in overflow alarm.

Clean  more powerful and efficient, with the special ESPA 0.4 Kw high-output pump that drives the foul water up to 6 metres vertically and up to 65 metres horizontally.

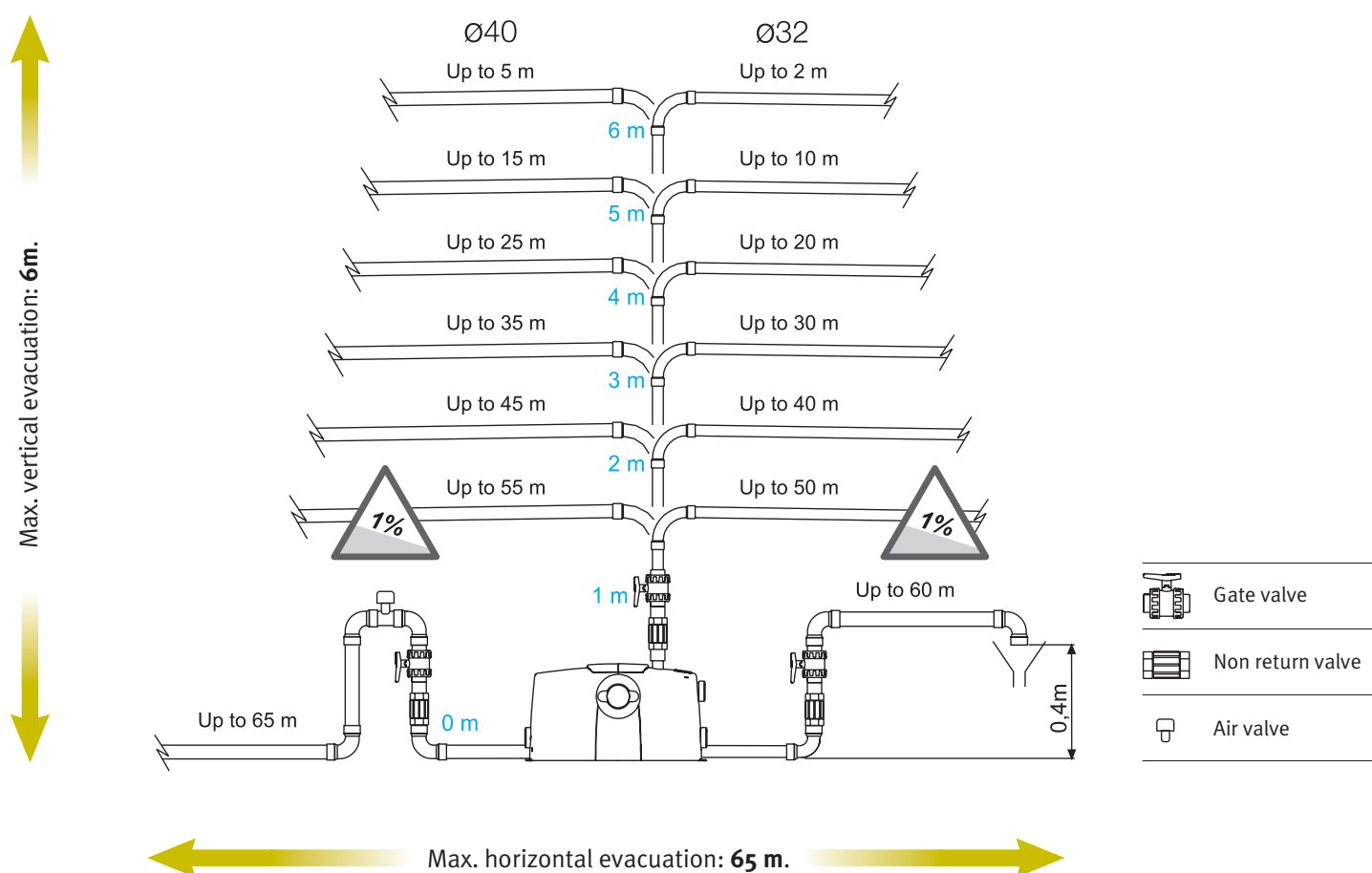
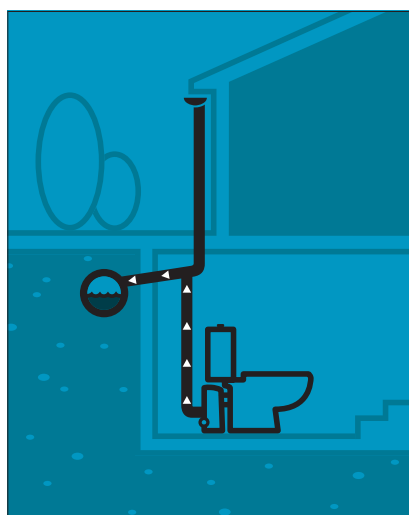


DIAGRAM OF EQUIVALENCES IN TERMS OF HEIGHTS AND LENGTHS



TECHNICAL FEATURES

Direct toilet connection: DN 100.
 Funnel in accordance with EN 33 and EN 37 standards.
 Diameter of foul water inlets: DN 40 or 32
 Main non-return valve and flaps in the foul water inlets
 Ventilation outlet with filter and safety valve
 Discharge pipe for DN 25 or 32 outlets. Adjustable.
 Non-return valve in the tank output pipe
 Based on the EN 12050-3 standard.
 Protection class: IP 44

ESPA presents **Clean System**, a new generation of evacuation pumps for sewage and grey waters, perfected by our engineers to provide the optimum solution for the needs of our clients.

Clean System is precisely the advanced solution for the evacuation of waste water in all environments: domestic, rural or urban, and even in complicated or unfavourable drainage conditions.

Clean System macerates water containing human waste and raises it to the level of the sewer system. CleanSystem is versatile, easy to install and performs exceptionally well.

Clean System is removable; it is symmetrical and very flexible in assembly and maintenance. It has a built-in 6-liter tank, a grinder pump and an odour-free ventilation system with an activated carbon filter.

1	Tank (6 l. capacity)
2	Grinder pump
3	WC connection
4	Filter cover
5	Foul water inlets
6	Adjustable outlet pipeline
7	Supply cable



COLLECTS
RECIRCULATES
PRESSURISES
IRRIGATES
EVACUATES
DEPURATES
REGENERATES
PURIFIES

ESPA GROUP stands by you to provide you with
the technology, the product, the service and the
support you need.